



UbiBot GS1-AETH1RSS Industrial-Grade WIFI RJ45 Temperature Humidity Light Data Logger IoT System (Optional – Wind Speed Sensor)



Model: UBIGS1AETH1RSS
Manufacture warranty: 12 months
Country of Origin: China

Descriptions

This version provides two ways of data synchronization: 2.4GHz WiFi and Ethernet cable. When used in an environment where WiFi is not available or unstable, the Ethernet cable helps a lot. This model is embedded with internal temperature and humidity sensors. Integrated with RS485 interface, external probes can also be connected, such as TH30S-B, soil temperature and humidity probe, etc. Because of the cable port, this version is not waterproof.

Please note, the GS1 device only supports Ethernet switch with 100 mbps or lower. Gigabit switching hub with auto-negotiation is also compatible.

The UbiBot® GS1 uses the cutting-edge IoT technologies to offer a more stable environmental monitoring with high performance. Via WiFi or RJ45 Ethernet cable, it detects environmental data all day round and automatically syncs all the data to the UbiBot®IoT Platform. The clear 4" screen allows you to instantly view the latest data. You can also access your device readings in real-time via our App or using a browser anywhere in the world.

Our cloud-based IoT platform offers advanced data analysis and management. It also allows you to setup real-time notifications - if a metric goes outside the range you specify, the platform will notify you through the app, by email, SMS text, voice call and HTTP, allowing you to respond promptly before costly damage happens. Please note, charges may apply to SMS text and voice call alert modes. These two modes cost the balance of the credits in your account.



Features

- Free App & email alerts
- Instant data visualization via LCD screen
- Data sync via WiFi & Ethernet cable connectivity
- 24/7 temperature & humidity monitoring
- RS485 interface, multiple probes accessible
- Multiple power supply methods
- Larger internal storage with up to 300,000 records
- No hub required

Package List

- 1 x GS1-AETH1RSS
- 1 x manual book
- 1 x Type-C USB cable(1m)
- 1 x Singapore Safety Mark 5V/2A Power Adapter (Provided to Singapore only)

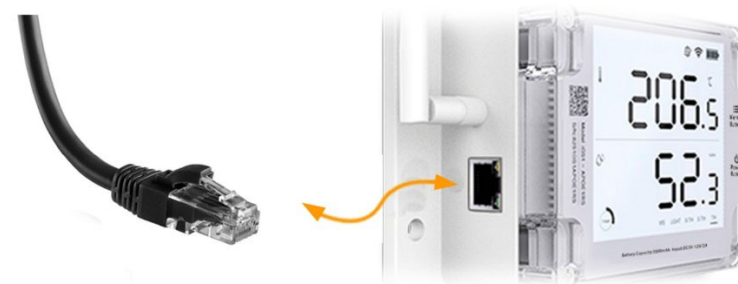
Multiple Accurate Sensors integrated into One Device



Specification:

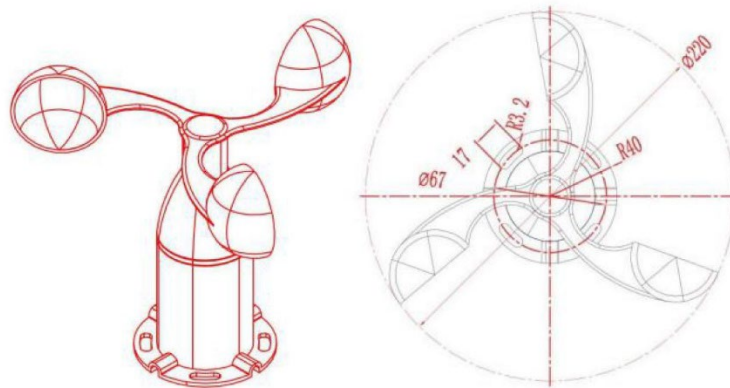
	Temperature	Humidity	External Light
Measure Range	-20 to 60°C	10 to 90% (No condensation)	0 to 83,000 lux
Accuracy	±0.3°C	±3%RH	±2%
Resolution	0.1	0.1	0.1

Memory	300,000 sensor records
Network connection	Wifi 2.4GHz or 2.4/5GHz, channels 1-13 (5GHz WiFi NOT supported)
Materials	Flame-resistant ABS + PC
Ethernet Specifications	RJ45 Ethernet cable
Ethernet switch	100 mbps or lower
Screen Size	4"
Material	Flame resistant ABS+PC
Switch Type	Button
Power Supply	Internal Lithium batteries 2900 mAh (Built-in) Type-C 5V USB Cable (1m) - Provided 5V2A UK Power adapter (Provided to Singapore only)
Monitor Dimensions	11.5 x 9 x 5.5 cm, Weight: 450g



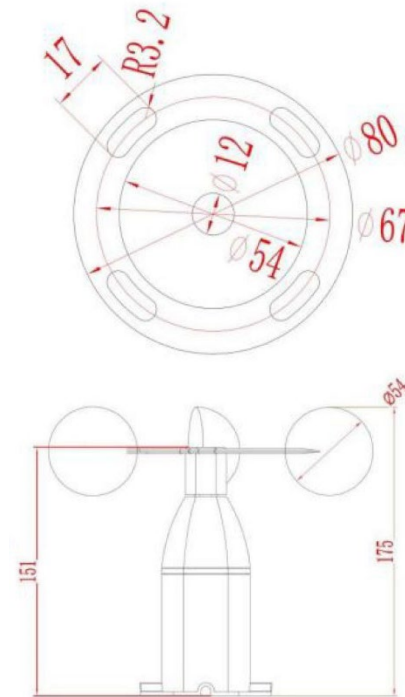


Optional – Wind Speed Sensor for GS1



Specification:

Measurement Range	0~30 m/s
Startup wind speed	≤ 0.3m/s
Accuracy	± (0.3+0.03v) m/s
Stabilization time	< 1 second
Response time	< 1 second
Working temperature	-30°C ~ 70°C
Working Humidity	15 ~ 85%RH (Non-condensation)
Cable Length	3m
Material	Aluminum





The cloud-based IoT platform

UbiBot[®] offers a revolutionary way to monitor environmental conditions where they matter. The sensors synchronize data to UbiBot[®] IoT Platform using WiFi, Cellular or Ethernet connection (depending on the specific model purchased). Users can then access data from anywhere via a smartphone or the Web console.

Features:

- **Data Management:** Manage all your IoT data in one place; you could add as many devices as you want to one UbiBot account.
- **Unlimited Storage:** Unlimited cloud-based storage ensures you will never run out of space. This allows you to view all your historical data via UbiBot App or Web.
- **Free App & Web Console:** Using UbiBot App and Web Console is free. Powerful and thoughtful features provide you brilliant experience.
- **Analysis and Visualization:** Use powerful analysis and visualization tools to get the most out of your data; spot trends and direct comparisons.
- **Real-Time Alerts:** Fully customizable alert system will notify you via App notifications, emails, phone call/SMS, HTTP whenever any metric goes out of the range preset.
- **Highly Secure Platform:** UbiBot IoT platform is designed to keep all your data secure so you never have to worry about hackers or other security issues.
- **Working with IFTTT, Alexa, Google Assistant, Google Sheet**
- Compliant with FDA CFR21

Details:

Real-time and history data

The UbiBot Platform is a cloud-based IoT platform where all measured data is uploaded and stored. UbiBot App and Web Console allow you to view current data as well as historical data in graphs.

Customizable alerts and bulk operation

Setting and receiving alerts on your devices helps you to get notified of the conditions timely. When you have many devices to manage, it's time-consuming to set each alert rule one by one. Therefore, we've developed a bulk operation module with which you can set the same rule for many devices at a time.

Data export

On UbiBot Platform, you can download the history data in CSV or PDF format. The CSV file only contains raw data, while the PDF file is a summarized report with average, maximum and minimum value within the chosen period. The PDF file is much easier to read and archive.

Device sharing and bulk operation

For business users, centralized control over multiple devices is available, with no limit on the number of devices in one account. Also available are bulk operations that apply to sensor settings, alerts, and remote control routines. Devices can be shared with other people, which allows for distributed management by different colleagues.

Intelligent automation in UbiBot platform

UbiBot is committed to building intelligent industrial and home ecosystems. By integrating temperature and humidity sensors and the smart plug SP1 in one system, automated operation is achieved through data linkage. For example, fans can be switched on when the temperature rises to 30 °C.

Data forwarding

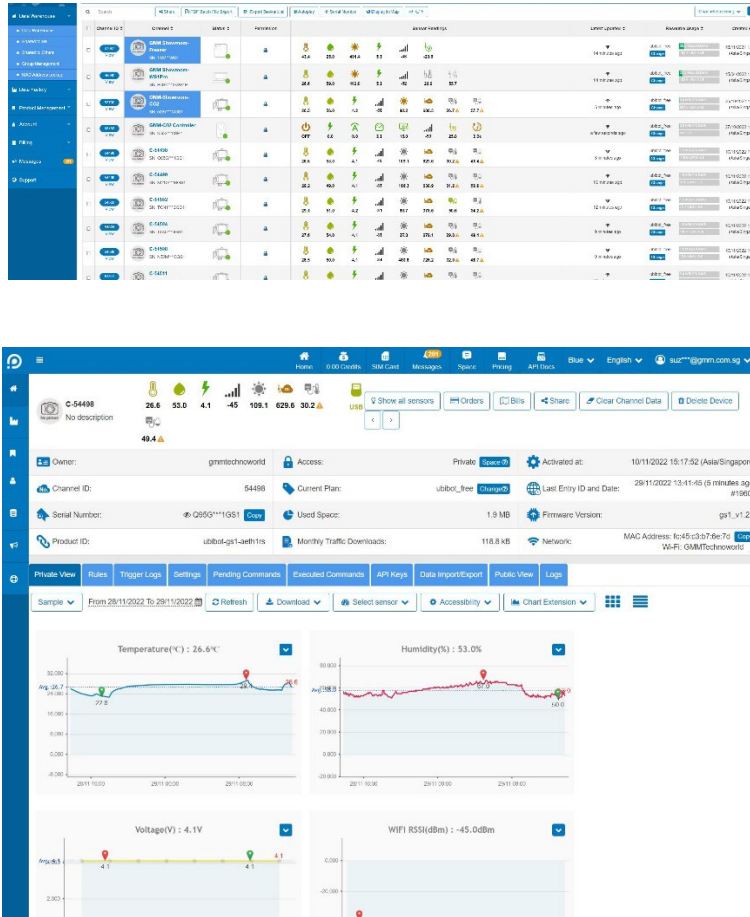
UbiBot is an open platform that provides cloud-based services while supporting customers to use their own storage servers. With the data forwarding service, you can forward the data collected by your device to your own private URL to protect privacy.

Platform-based calibration

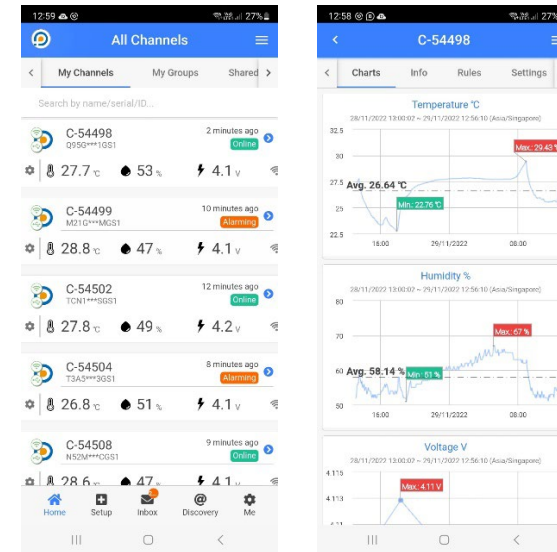
UbiBot platform supports data calibration both on the platform level as well as the device level. One-step calibration, instant display, no impact on historical data.



View Data from PC Dashboard



View Data from Mobile APP Dashboard



Download Data in Excel or PDF Format

created_at	field1 (Temperature °C)	field2 (Humidity)	field3 (Light)	field4 (Voltage)
2019-05-27T15:28:08+08:00	25.88121	60	81.639999	5
2019-05-27T15:28:10+08:00	25.894562	60	76.439995	5
2019-05-27T15:28:12+08:00	25.937286	61	76.919998	5
2019-05-27T15:28:14+08:00	25.937286	61	79.5	5
2019-05-27T15:28:15+08:00	25.966666	62	77.799995	5
2019-05-27T15:28:16+08:00	25.966666	62	75.919998	5
2019-05-27T15:28:18+08:00	26.006714	62	76.860001	5
2019-05-27T15:28:19+08:00	26.022736	62	77.720001	5
2019-05-27T15:28:25+08:00	26.121536	63	78.540001	5
2019-05-27T15:28:47+08:00	26.404594	60	97.439995	5
2019-05-27T15:28:51+08:00				
2019-05-27T15:29:47+08:00	26.615547	58	78.939995	
2019-05-27T15:30:47+08:00	26.658272	58	86.559998	
2019-05-27T15:31:47+08:00	26.700996	57	96.839996	
2019-05-27T15:32:47+08:00	26.700996	57	84.479996	
2019-05-27T15:33:47+08:00	26.743721	57	83.279999	